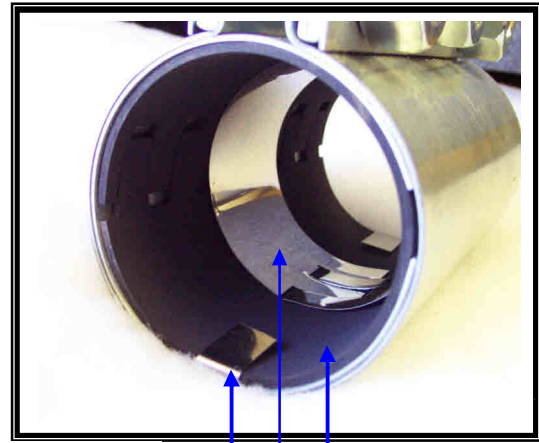
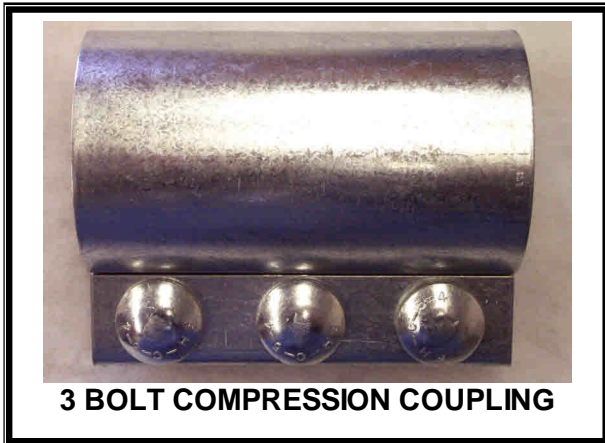


**COUPLINGS (compression)**



GND STRIP (GS)  
 GASKET PROTECTOR (GP)  
 GASKET NEOPRENE (GAS)  
 INCLUDES GND STRIP (GS)

COUPLING	PART # INCLUDES: GAS, *GP & GS
1.5" 2 BOLT	412914
1.5" 3 BOLT	404602
1.75" 2 BOLT	414523
1.75" 3 BOLT	414524
2.0" 2 BOLT	412915
2.0" 3 BOLT	404603
2.25" 2 BOLT	414525
2.25" 3 BOLT	414526
2.5" 3 BOLT	408004
3.0" 3 BOLT	404601
4.0" 3 BOLT	414507
4.0" 4 BOLT	405840
5.0" 4 BOLT	414508
6.0" 4 BOLT	414509

COUPLING	(GAS) NEOPRENE	(GP)
1.5" 2 BOLT	414512	----
1.5" 3 BOLT	405910	414527
1.75" 2 BOLT	414519	----
1.75" 3 BOLT	414520	414528
2.0" 2 BOLT	405911	----
2.0" 3 BOLT	407999	414529
2.25" 2 BOLT	414521	----
2.25" 3 BOLT	414522	414530
2.5" 3 BOLT	414513	414531
3.0" 3 BOLT	414514	414532
4.0" 3 BOLT	414515	414533
4.0" 4 BOLT	414516	414534
5.0" 4 BOLT	414517	414535
6.0" 4 BOLT	414518	414536

\* GASKET PROTECTOR (GP) NOT INCLUDED  
 W/2BOLT COUPLINGS

**COUPLINGS (quick coupler)**

DESCRIPTION	PART #
1-1/2" ADAPT MALE TO HOSE ALUM	405775
2" ADAPT MALE TO HOSE ALUM	405776
2-1/2" ADAPT MALE TO HOSE ALUM	-----
3" ADAPT MALE TO HOSE ALUM	405777
4" ADAPT MALE TO HOSE ALUM	405779
5" ADAPT MALE TO HOSE ALUM	-----
6" ADAPT MALE TO HOSE ALUM	-----



DESCRIPTION	PART #
1-1/2" ADAPT FEM. TO HOSE ALUM.	405844
2" ADAPT FEM TO HOSE ALUM.	404613
2-1/2" ADAPT FEM. TO HOSE ALUM.	407004
3" ADAPT FEM TO HOSE ALUM.	404608
4" ADAPT FEM. TO HOSE ALUM.	414537
5" ADAPT FEM. TO HOSE ALUM.	414538
6" ADAPT FEM. TO HOSE ALUM.	414539



SIZE	GASKET (BUNA MAT'L)
1-1/2"	414540
2"	414541
2-1.2"	414542
3"	414543
4"	414544
5"	414545
6"	414546

DESCRIPTION	PART #
1-1/2" DUST CAP ALUM.	404612
2" DUST CAP ALUM.	404611
2-1/2" DUST CAP ALUM.	407147
3" DUST CAP ALUM.	404570
4" DUST CAP ALUM.	405816
5" DUST CAP ALUM.	407148
6" DUST CAP ALUM.	414549



**COUPLINGS (quick coupler)**

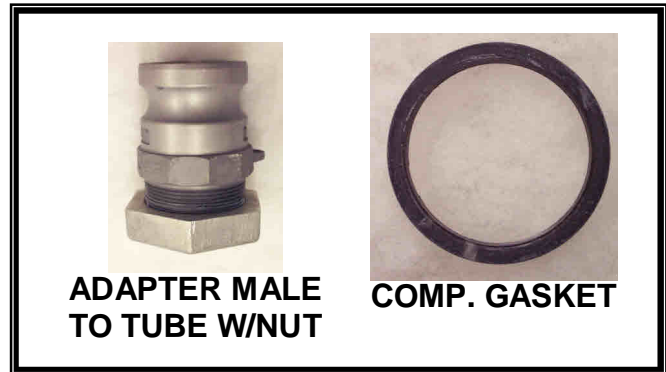
DESCRIPTION	PART #
1-1/2" DUST PLUG ALUM.	404738
2" DUST PLUG ALUM.	404575
2-1/2" DUST PLUG ALUM.	414550
3" DUST PLUG ALUM.	404437
4" DUST PLUG ALUM.	414551
5" DUST PLUG ALUM.	414552
6" DUST PLUG ALUM.	414553



SIZE	CHAIN BRASS
6" LONG	405818
12" LONG	407057



DESCRIPTION	PART #
1-1/2" ADAP MALE TO TUBE W/NUT	405849
2" ADAP MALE TO TUBE W/NUT	404626
2-1/2" ADAP MALE TO TUBE W/NUT	407005
3" ADAP MALE TO TUBE W/NUT	404614
4" ADAP MALE TO TUBE W/NUT	405778



SIZE	COMP. NUT	GASKET
1-1/2"	414554	414558
2"	414555	414559
2-1/2"	414556	414560
3"	414557	414561

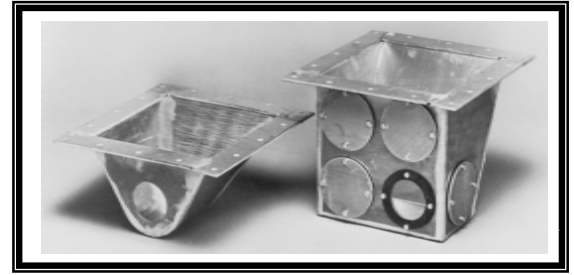
DESCRIPTION	PART #
1-1/2" ADAP QUICKIE MALE TO TUBE 16GA	414450
2" ADAP QUICKIE MALE TO TUBE 16GA	414451
2-1/2" ADAP QUICKIE MALE TO TUBE 16GA	414452
3" ADAP QUICKIE MALE TO TUBE 14GA	414453
4" ADAP QUICKIE MALE TO TUBE 11GA	414454



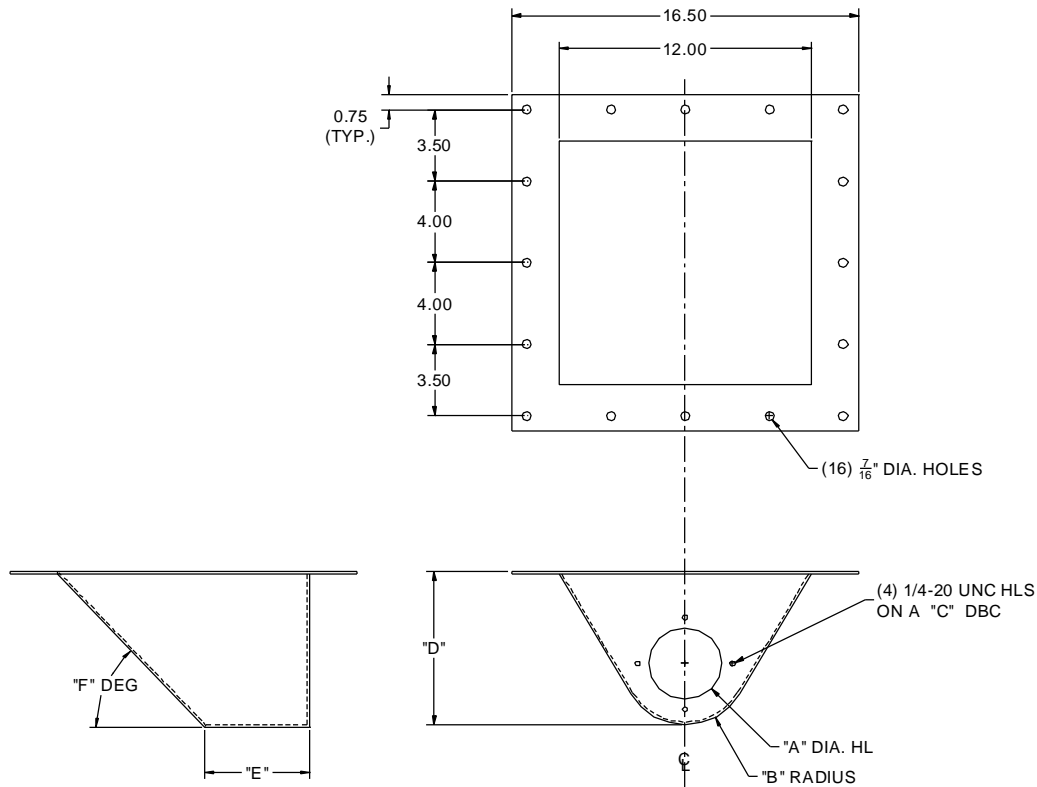
## Single & Multiple Probe Boxes

### Single Pick-Up Probe Boxes

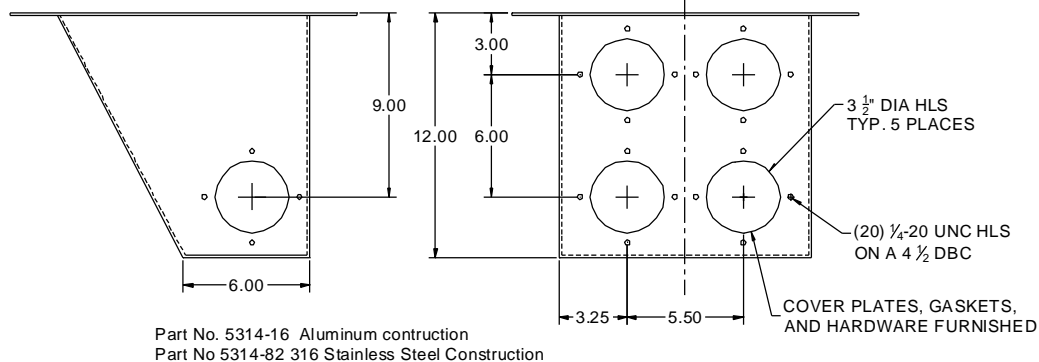
Probe size	Part No.		A	B	C	D	E	F
	Aluminum	316 S.S.						
1 1/2 2 2 1/2 3	5314-48	5314-83	3 1/2"	3"	4 1/2"	7 1/2"	5"	45 D
4	5314-58	---	5 1/4"	4"	6 1/2"	8 3/4"	7 1/4"	60 D



### Single Pick-Up Probe Boxes

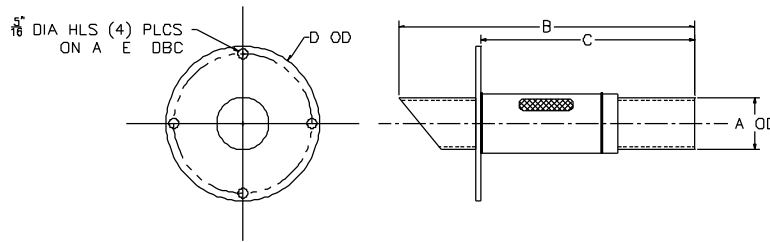


### Multiple Pick-Up Probe Boxes



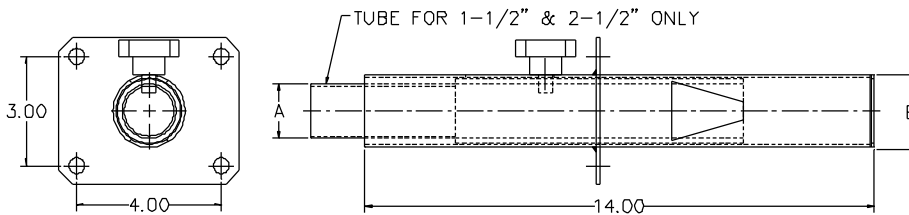
## **TAKE OFF's 5000 series**

Size Tubing	Part No. 5000 series		A	B	C	D	E
	Aluminum	316 S.S.					
1-1/2	5314-40	--	1-1/2	11-3/8	7	5-1/2	4-1/2
2	5314-13	5314-86	2	12-1/2	7-7/8	5-1/2	4-1/2
2-1/2	5314-68	--	2-1/2	13-1/4	7-7/8	5-1/2	4-1/2
3	5314-47	5314-88	3	14	8-3/4	5-1/2	4-1/2
4	5314-57		4	17	9-3/4	7-1/2	6-1/2



## **TAKE OFF's W/SLIDE TUBES**

SIZE	A	B	PART NO
1-1/2	1-1/2	2	AS97011-C
2	--	2	AS97012-C
2-1/2	2-1/2	3	AS99023-C
3	--	3	AS99024-C



## **PICKUP TUBES**

DESCRIPTION	PART #
1-1/2" O.D. S.S.	300466
2" O.D. S.S.	300482
2-1/2" O.D. S.S.	303094-C
3" O.D. S.S.	300952-C
KNOB FOR PICKUP TUBES (W/NYLOCK)	407996
KNOB FOR DRYERS	414820



**STRAIGHTS**

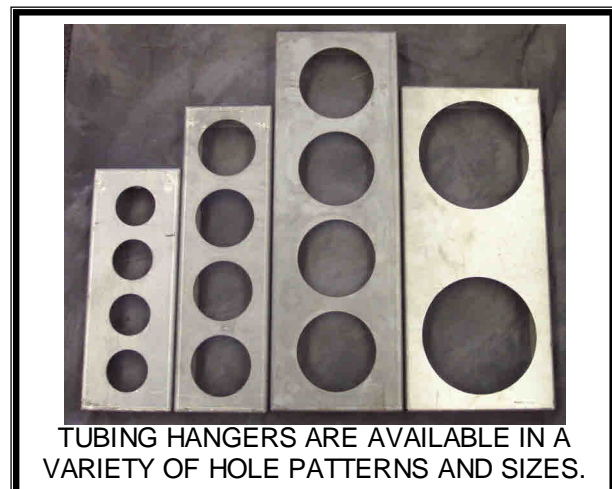
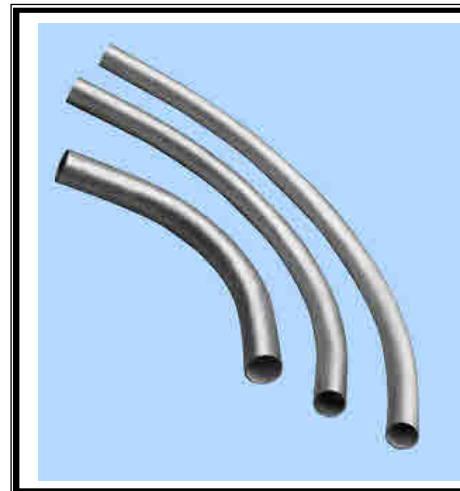
DESCRIPTION	PART #
1 1/2" 16GA ALUM.	406679
1 1/2" 16GA S.S.	404864
2.0" 16GA ALUM.	406680
2.0" 16GA S.S.	406671
2.5" 16GA ALUM.	407149
2.5" 16GA S.S.	414192
3.0" 14GA ALUM.	404880
3.0" 14GA S.S.	414564
4.0" 11GA ALUM.	406682
4.0" 11GA S.S.	414565
5.0" 11GA ALUM.	414566
5.0" 11GA S.S.	414567
6.0" 11GA ALUM.	414568
6.0" 11GA S.S.	414569



STRAIGHTS & BENDS  
 AVAILABLE IN ALUMINUM,  
 STAINLESS & CERAMIC LINED  
 IN A VARIETY OF WALL  
 THICKNESSES AND SIZES.  
 CALL FOR COMPLETE LIST.

**BENDS**

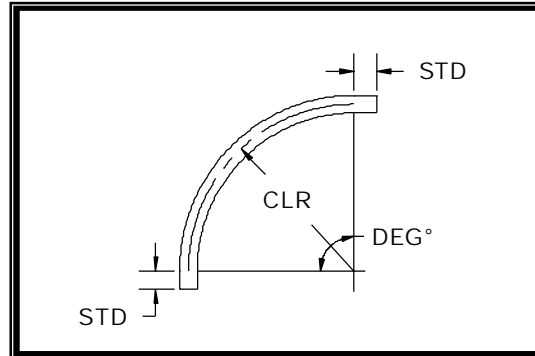
DESCRIPTION	PART #
1 1/2" 16GA ALUM. 45DEG. 6" CLR	414562
1 1/2" 16GA ALUM. 90DEG. 6" CLR	414570
1 1/2" 16GA S.S. 45DEG. 6" CLR	414571
1 1/2" 16GA S.S. 90DEG. 6" CLR	414572
1 1/2" 16GA ALUM. 45DEG. 12" CLR	414573
1 1/2" 16GA ALUM. 90DEG. 12" CLR	414574
1 1/2" 16GA S.S. 45DEG. 12" CLR	414575
1 1/2" 16GA S.S. 90DEG. 12" CLR	414576
1 1/2" 16GA ALUM. 45DEG. 18" CLR	414577
1 1/2" 16GA ALUM. 90DEG. 18" CLR	414578
1 1/2" 16GA S.S. 45DEG. 18" CLR	414579
1 1/2" 16GA S.S. 90DEG. 18" CLR	414580
1 1/2" 16GA ALUM. 45DEG. 24" CLR	410462
1 1/2" 16GA ALUM. 90DEG. 24" CLR	404994
1 1/2" 16GA S.S. 45DEG. 24" CLR	414581
1 1/2" 16GA S.S. 90DEG. 24" CLR	404993
1 1/2" 16GA ALUM. 45DEG. 30" CLR	414582
1 1/2" 16GA ALUM. 90DEG. 30" CLR	414583
1 1/2" 16GA S.S. 45DEG. 30" CLR	414584
1 1/2" 16GA S.S. 90DEG. 30" CLR	414585
1 1/2" 16GA ALUM. 45DEG. 36" CLR	414586
1 1/2" 16GA ALUM. 90DEG. 36" CLR	414587
1 1/2" 16GA S.S. 45DEG. 36" CLR	414588
1 1/2" 16GA S.S. 90DEG. 36" CLR	414589



TUBING HANGERS ARE AVAILABLE IN A VARIETY OF HOLE PATTERNS AND SIZES.

## Tube Bending Capabilities

Pipe and tube bends of up to 180 degrees are readily available in aluminum, stainless, carbon steel and galvanized in the sizes listed below. Other centerline radii are available but not shown. Special shapes, "U" bends, offsets, and bifurcated bends available upon request.



TUBE SIZE	PIPE SIZE	OUTSIDE DIAMETER		COMMON CENTERLINE RADI (CLR) INCHES	STD. TANGENT (ST)
		INCHES	MILLIMETERS		
1"		1.0	25.4	3, 4, 6, 12	4"
	1"	1.315	33.4	3, 5	4"
1-1/4"		1.25	31.8	3, 7.25	4"
	1-1/4"	1.660	42.2	3.5, 4, 6.25	4"
1-1/2"		1.5	38.1	2.5, 6, 7.5, 9, 12, 15, 18, 24, 30, 36	4"
1-3/4"		1.75	44.5	2.5, 8, 9, 12, 15, 24, 30, 36, 48	4"
	1-1/2"	1.9	48.3	5, 6, 7.5, 9, 10, 12, 18, 24, 30, 36, 48	4"
2"		2.0	50.8	2.5, 5, 6, 8, 8.5, 9, 10, 12, 15, 18, 24, 30, 36, 48	4"
2-1/8"		2.125	54.0	5, 12, 24, 30, 36	4-1/4"
2-1/4"		2.25	57.2	3, 9, 12, 15, 17, 24, 30, 36	4-1/2"
	2"	2.375	60.2	6, 7.5, 10, 12, 15, 17, 24, 30, 36, 48	4"
2-1/2"		2.5	63.5	4, 6, 9, 12, 15, 17, 24, 30, 36, 48	5"
2-3/4"		2.75	69.9	17, 30, 36, 48	5-1/2"
	2-1/2"	2.875	73.0	12, 12.5, 15, 17, 24, 30, 36, 60	5"
3"		3.0	76.2	4.5, 7.5, 9, 10, 12, 15, 18, 24, 30, 36, 48, 60	6"
3-1/4"		3.25	82.6	17, 30, 36	6-1/2"
3-1/2"	3"	3.5	88.9	3.5, 6, 8.75, 12, 15, 16, 18, 24, 30, 36, 48	7" (6" - pipe)
3-3/4"		3.75	95.3	17, 24, 32, 36	7-1/2"
4"	3-1/2"	4.0	101.6	6, 10, 12, 16, 18, 20, 24, 30, 32, 36, 48, 60	8" (7" - pipe)
4-1/4"		4.25	107.9	16, 30, 36, 48, 60	8-1/2"
4-1/2"	4"	4.5	114.3	6, 9, 12, 16, 18, 20, 24, 30, 32, 36, 48, 60	9" (8" - pipe)
4-3/4"		4.75	120.7	36	9-1/2"
5"		5.0	127.0	7.5, 12.5, 17, 22, 24, 30, 36, 42, 48, 60	10"
	5"	5.563	141.3	15, 20, 24, 30, 36, 42, 48, 60, 72	10"
5-1/2"		5.5	139.7	30, 36	11"
6"		6.0	152.4	9, 15, 18, 24, 30, 36, 42, 48, 60, 72	12"
	6"	6.625	168.2	18, 24, 30, 36, 42, 48, 60, 72	12"
8"		8.0	203.2	12, 20, 32, 48, 60, 72	16"
	8"	8.625	219.1	24, 32, 40, 48, 60, 72	16"
	10"	10.75	273.1	40, 50	20"

Capabilities subject to change without notice.

**BENDS cont.**

DESCRIPTION	PART #
2" 16GA ALUM. 45DEG. 6" CLR	414591
2" 16GA ALUM. 90DEG. 6" CLR	413992
2" 16GA S.S. 45DEG. 6" CLR	414592
2" 16GA S.S. 90DEG. 6" CLR	414593
2" 16GA ALUM. 45DEG. 12" CLR	414594
2" 16GA ALUM. 90DEG. 12" CLR	414595
2" 16GA S.S. 45DEG. 12" CLR	414596
2" 16GA S.S. 90DEG. 12" CLR	414597
2" 16GA ALUM. 45DEG. 18" CLR	414598
2" 16GA ALUM. 90DEG. 18" CLR	414599
2" 16GA S.S. 45DEG. 18" CLR	414600
2" 16GA S.S. 90DEG. 18" CLR	414601
2" 16GA ALUM. 45DEG. 24" CLR	404013
2" 16GA ALUM. 90DEG. 24" CLR	405162
2" 16GA S.S. 45DEG. 24" CLR	406030
2" 16GA S.S. 90DEG. 24" CLR	406029
2" 16GA ALUM. 45DEG. 30" CLR	414604
2" 16GA ALUM. 90DEG. 30" CLR	414605
2" 16GA S.S. 45DEG. 30" CLR	414606
2" 16GA S.S.. 90DEG. 30" CLR	414607
2" 16GA ALUM. 45DEG. 36" CLR	414608
2" 16GA ALUM. 90DEG. 36" CLR	414609
2" 16GA S.S. 45DEG. 36" CLR	414610
2" 16GA S.S.. 90DEG. 36" CLR	414611
2" 16GA ALUM. 45DEG. 48" CLR	414612
2" 16GA ALUM. 90DEG. 48" CLR	414613
2" 16GA S.S. 45DEG. 48" CLR	414614
2" 16GA S.S.. 90DEG. 48" CLR	414615

DESCRIPTION	PART #
2 ½" 16GA ALUM. 45DEG. 6" CLR	414616
2 ½" 16GA ALUM. 90DEG. 6" CLR	414617
2 ½" 16GA S.S. 45DEG. 6" CLR	414618
2 ½" 16GA S.S. 90DEG. 6" CLR	414619
2 ½" 16GA ALUM. 45DEG. 12" CLR	414620
2 ½" 16GA ALUM. 90DEG. 12" CLR	414621
2 ½" 16GA S.S. 45DEG. 12" CLR	414622
2 ½" 16GA S.S. 90DEG. 12" CLR	414623
2 ½" 16GA ALUM. 45DEG. 24" CLR	414624
2 ½" 16GA ALUM. 90DEG. 24" CLR	414625
2 ½" 16GA S.S. 45DEG. 24" CLR	405035
2 ½" 16GA S.S. 90DEG. 24" CLR	405034
2 ½" 16GA ALUM. 45DEG. 30" CLR	414628
2 ½" 16GA ALUM. 90DEG. 30" CLR	414629
2 ½" 16GA S.S. 45DEG. 30" CLR	414630
2 ½" 16GA S.S. 90DEG. 30" CLR	414631
2 ½" 16GA ALUM. 45DEG. 36" CLR	407146
2 ½" 16GA ALUM. 90DEG. 36" CLR	407145
2 ½" 16GA S.S. 45DEG. 36" CLR	406038
2 ½" 16GA S.S.. 90DEG. 36" CLR	406033
2 ½" 16GA ALUM. 45DEG. 48" CLR	414634
2 ½" 16GA ALUM. 90DEG. 48" CLR	414635
2 ½" 16GA S.S. 45DEG. 48" CLR	406041
2 ½" 16GA S.S.. 90DEG. 48" CLR	414637



**BENDS cont.**

DESCRIPTION	PART #
3" 14GA ALUM. 45DEG. 12" CLR	414638
3" 14GA ALUM. 90DEG. 12" CLR	414639
3" 14GA S.S. 45DEG. 12" CLR	414640
3" 14GA S.S. 90DEG. 12" CLR	414641
3" 14GA ALUM. 45DEG. 18" CLR	414642
3" 14GA ALUM. 90DEG. 18" CLR	414643
3" 14GA S.S. 45DEG. 18" CLR	414644
3" 14GA S.S. 90DEG. 18" CLR	414645
3" 14GA ALUM. 45DEG. 24" CLR	414646
3" 14GA ALUM. 90DEG. 24" CLR	414647
3" 14GA S.S. 45DEG. 24" CLR	414648
3" 14GA S.S. 90DEG. 24" CLR	414649
3" 14GA ALUM. 45DEG. 30" CLR	414650
3" 14GA ALUM. 90DEG. 30" CLR	414651
3" 14GA S.S. 45DEG. 30" CLR	406032
3" 14GA S.S.. 90DEG. 30" CLR	406031
3" 14GA ALUM. 45DEG. 36" CLR	407540
3" 14GA ALUM. 90DEG. 36" CLR	403950
3" 14GA S.S. 45DEG. 36" CLR	405037
3" 14GA S.S.. 90DEG. 36" CLR	405036
3" 14GA ALUM. 45DEG. 48" CLR	414656
3" 14GA ALUM. 90DEG. 48" CLR	414657
3" 14GA S.S. 45DEG. 48" CLR	414658
3" 14GA S.S.. 90DEG. 48" CLR	414659
3" 14GA ALUM. 45DEG. 60" CLR	414660
3" 14GA ALUM. 90DEG. 60" CLR	414661
3" 14GA S.S. 45DEG. 60" CLR	414662
3" 14GA S.S.. 90DEG. 60" CLR	414663

DESCRIPTION	PART #
4" 11GA ALUM. 45DEG. 12" CLR	414664
4" 11GA ALUM. 90DEG. 12" CLR	414665
4" 11GA S.S. 45DEG. 12" CLR	414666
4" 11GA S.S. 90DEG. 12" CLR	414667
4" 11GA ALUM. 45DEG. 18" CLR	414668
4" 11GA ALUM. 90DEG. 18" CLR	414669
4" 11GA S.S. 45DEG. 18" CLR	414670
4" 11GA S.S. 90DEG. 18" CLR	414671
4" 11GA ALUM. 45DEG. 24" CLR	414672
4" 11GA ALUM. 90DEG. 24" CLR	414673
4" 11GA S.S. 45DEG. 24" CLR	414674
4" 11GA S.S. 90DEG. 24" CLR	414675
4" 11GA ALUM. 45DEG. 30" CLR	414676
4" 11GA ALUM. 90DEG. 30" CLR	414677
4" 11GA S.S. 45DEG. 30" CLR	414678
4" 11GA S.S.. 90DEG. 30" CLR	414679
4" 11GA ALUM. 45DEG. 36" CLR	406034
4" 11GA ALUM. 90DEG. 36" CLR	406035
4" 11GA S.S. 45DEG. 36" CLR	414680
4" 11GA S.S.. 90DEG. 36" CLR	405042
4" 11GA ALUM. 45DEG. 48" CLR	414682
4" 11GA ALUM. 90DEG. 48" CLR	414683
4" 11GA S.S. 45DEG. 48" CLR	414684
4" 11GA S.S.. 90DEG. 48" CLR	414685
4" 11GA ALUM. 45DEG. 60" CLR	414686
4" 11GA ALUM. 90DEG. 60" CLR	414687
4" 11GA S.S. 45DEG. 60" CLR	414688
4" 11GA S.S.. 90DEG. 60" CLR	414689

**BENDS cont.**

DESCRIPTION	PART #
5" 11GA ALUM. 45DEG. 24" CLR	414690
5" 11GA ALUM. 90DEG. 24" CLR	414691
5" 11GA S.S. 45DEG. 24" CLR	414692
5" 11GA S.S. 90DEG. 24" CLR	414693
5" 11GA ALUM. 45DEG. 30" CLR	414694
5" 11GA ALUM. 90DEG. 30" CLR	414695
5" 11GA S.S. 45DEG. 30" CLR	414696
5" 11GA S.S. 90DEG. 30" CLR	414697
5" 11GA ALUM. 45DEG. 36" CLR	414698
5" 11GA ALUM. 90DEG. 36" CLR	403656
5" 11GA S.S. 45DEG. 36" CLR	414699
5" 11GA S.S. 90DEG. 36" CLR	414700
5" 11GA ALUM. 45DEG. 42" CLR	414701
5" 11GA ALUM. 90DEG. 42" CLR	414702
5" 11GA S.S. 45DEG. 42" CLR	414703
5" 11GA S.S.. 90DEG. 42" CLR	414704
5" 11GA ALUM. 45DEG. 48" CLR	414705
5" 11GA ALUM. 90DEG. 48" CLR	414706
5" 11GA S.S. 45DEG. 48" CLR	414707
5" 11GA S.S.. 90DEG. 48" CLR	414708
5" 11GA ALUM. 45DEG. 60" CLR	414709
5" 11GA ALUM. 90DEG. 60" CLR	414710
5" 11GA S.S. 45DEG. 60" CLR	414711
5" 11GA S.S.. 90DEG. 60" CLR	414712

DESCRIPTION	PART #
6" 11GA ALUM. 45DEG. 24" CLR	414713
6" 11GA ALUM. 90DEG. 24" CLR	414714
6" 11GA S.S. 45DEG. 24" CLR	414715
6" 11GA S.S. 90DEG. 24" CLR	414716
6" 11GA ALUM. 45DEG. 30" CLR	414717
6" 11GA ALUM. 90DEG. 30" CLR	414718
6" 11GA S.S. 45DEG. 30" CLR	414719
6" 11GA S.S. 90DEG. 30" CLR	414720
6" 11GA ALUM. 45DEG. 36" CLR	414721
6" 11GA ALUM. 90DEG. 36" CLR	414722
6" 11GA S.S. 45DEG. 36" CLR	414723
6" 11GA S.S. 90DEG. 36" CLR	414724
6" 11GA ALUM. 45DEG. 48" CLR	414729
6" 11GA ALUM. 90DEG. 48" CLR	414730
6" 11GA S.S. 45DEG. 48" CLR	414731
6" 11GA S.S.. 90DEG. 48" CLR	414732
6" 11GA ALUM. 45DEG. 60" CLR	414733
6" 11GA ALUM. 90DEG. 60" CLR	414734
6" 11GA S.S. 45DEG. 60" CLR	414735
6" 11GA S.S.. 90DEG. 60" CLR	414736
6" 11GA ALUM. 45DEG. 72" CLR	414737
6" 11GA ALUM. 90DEG. 72" CLR	414738
6" 11GA S.S. 45DEG. 72" CLR	414739
6" 11GA S.S.. 90DEG. 72" CLR	414740

**WYES**

DESCRIPTION	PART #
1 1/2" 45 DEG 16GA ALUM.	414741
1 1/2" 45 DEG 16GA S.S.	414742
2" 45 DEG 16GA ALUM.	414743
2" 45 DEG 16GA S.S.	414744
2 1/2" 45 DEG 16GA AUM.	414745
2 1/2" 45 DEG 16GA S.S.	414746
3" 45 DEG 14GA AUM	413126
3" 45 DEG 14GA S.S.	414747
4" 45 DEG 11GA ALUM.	414748
4" 45 DEG 11GA S.S.	414749

**Wyes**

OD	30°		45°	
	C	D	C	D
2"	8"	8"	8"	8"
2-1/2"	8"	8"	8"	8"
3"	8"	8"	8"	8"
4"	8"	8"	8"	8"
4-1/2"	10"	10"	10"	10"
5"	11"	11"	11"	11"
6"	12"	12"	12"	12"
8"	14"	14"	14"	14"

**LATERALS**

DESCRIPTION	PART #
1 1/2" 45 DEG 16GA ALUM.	409676
1 1/2" 45 DEG 16GA S.S.	414750
2" 45 DEG 16GA ALUM.	408060
2" 45 DEG 16GA S.S.	401994
2 1/2" 45 DEG 16GA AUM.	402398
2 1/2" 45 DEG 16GA S.S.	414751
3" 45 DEG 14GA ALUM.	413127
3" 45 DEG 14GA S.S.	414752
4" 45 DEG 11GA ALUM	411045
4" 45 DEG 11GA S.S.	414753

**Laterals**

Plain End Lateral

OD	30°		45°	
	G	H	G	H
2"	8"	16"	8"	16"
2-1/2"	9"	18"	8"	16"
3"	10"	20"	8"	16"
4"	12"	24"	10"	20"
4-1/2"	12"	24"	10"	20"
5"	15"	30"	12"	24"
6"	18"	36"	15"	30"
8"	22"	40"	18"	36"

**TEE'S**

DESCRIPTION	PART #
1 1/2" TEE ALUM 16GA	405219
2" TEE ALUM 16GA	410234
2 1/2" TEE ALUM 16GA	SK90018A
3" TEE ALUM 14GA	414755
4" TEE ALUM 11GA	414754

**Tees**

OD	A	B
2"	16"	8"
2-1/2"	16"	8"
3"	16"	8"
4"	16"	8"
4-1/2"	18"	9"
5"	18"	9"
6"	20"	10"
8"	24"	12"

WYES OFFSETS & TEE'S ARE AVAILABLE IN ALUMINUM, STAINLESS & CERAMIC LINED IN A VARIETY OF WALL THICKNESSES AND SIZES. CALL FOR COMPLETE LIST.

PARALLEL LATERALS, OFFSETS & PARALLEL WYES ARE AVAILABLE IN DIFFERENT SIZES AND MATERIALS. CALL FOR DETAILS..



**PARALLEL LATERAL**



**PARALLEL WYE**



**OFFSETS**

**PLUGS VACUUM LINE**



DESCRIPTION	PART #
PLUG 1 1/2" VACUUM LINE	<b>413651</b>
PLUG 2" VACUUM LINE	<b>413652</b>
PLUG 3" VACUUM LINE	<b>414113</b>



**FOR 2 1/2" ONLY**

DESCRIPTION	PART #
PLUG 2 1/2" VACUUM LINE	<b>415330</b>
COUPLING COMPRESSION 2 1/2"	<b>408004</b>
FOR ATTACHING PLUG	

**GUAGES**

DESCRIPTION	PART #
METER DIGITAL PRESSURE.	<b>414756</b>
GAUGE VACUUM 2.5" LIQ. STD	<b>410740</b>

