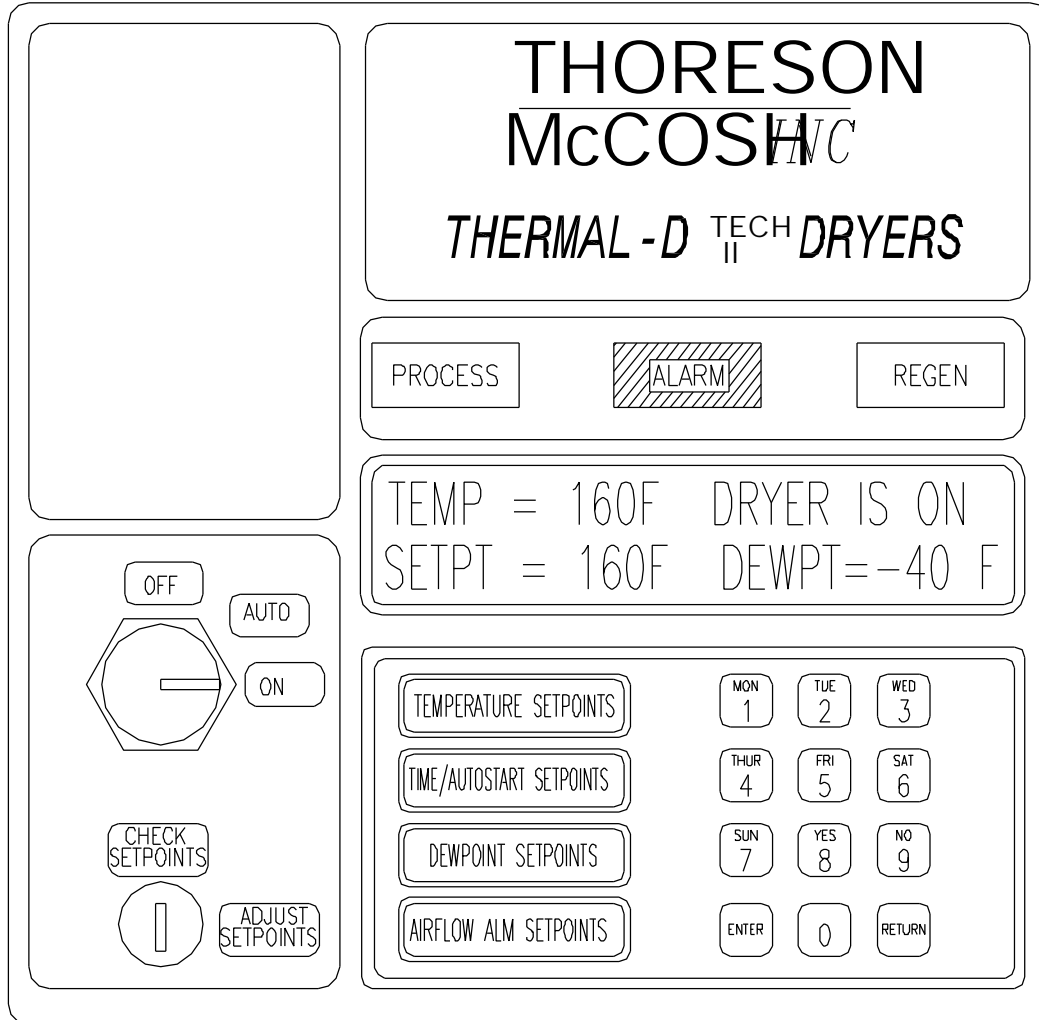


TECH 2 Dew Point Retrofit Kit



Instruction Manual 412765A

THORESON-McCOSH INC
1885 Thunderbird St. Troy MI. 48084
Phone 1-248-362-0960
Fax 1-248-362-5270
sales@thoresonmccosh.com

Thoreson-McCosh Inc

FORWARD

The information contained in this Instruction Manual is provided to you for the maintenance of your Thoreson McCosh equipment.

Also included in this manual are operating instructions, a service parts list, and wiring diagrams. Please file this manual for future use.

For additional information, please contact:

THORESON-McCOSH Inc.

1885 Thunderbird Street

Troy, MI 48084

Phone: (248) 362-0960

Facsimile: (248) 362-5270

sales@thoresonmccosh.com

CUSTOMER RECORDS

Upon receipt of your Thoreson McCosh equipment, it is very important that you complete the table below. The information will be needed to best serve you when you call the Thoreson McCosh Service Department with questions or to order replacement parts. The information is located on the Serial Tag on the unit and inside the door of the control box.

Model Name _____

Serial No. _____

Wiring Diagram No. _____

Insert No. _____

Program No. _____

Layout No. _____

Table of Contents

SECTION 1: WARRANTY.....2
SECTION 2: INSTRUCTIONS.....3
 2.1: INTRODUCTION.....3
 2.2: INSTALLATION AND SETUP3
 LAYOUT4
SECTION 3: PARTS.....5
 303980B5
 6397 BOARD WIRING.....6

SECTION 1: THORESON MCCOSH PRODUCT WARRANTY

Thoreson McCosh warrants each product of its manufacture to be free from defects in material and workmanship for a period of 12 months from the date of delivery to the original purchaser. Thoreson McCosh's obligation under this warranty is limited to repairing or replacing any part returned to the Thoreson McCosh factory with transportation charges prepaid, and which, on examination by Thoreson McCosh, shall disclose to Thoreson McCosh's satisfaction to have been defective.

The purchaser must notify Thoreson McCosh of such defects and promptly deliver the defective part(s) in accordance with Thoreson McCosh's shipping instructions, delivery prepaid. Parts will be replaced F.O.B. Thoreson McCosh factory, by Thoreson McCosh, and will be invoiced to the purchaser with "credit on return of defective part", if the part is returned within fifteen (15) days after shipment of replacement part. Thoreson McCosh is not liable for installation or cost to install the replacement part or removal of the defective part.

Thoreson McCosh is not responsible for any failure of its product due to improper use, installation, or operation. Thoreson McCosh shall not assume any expense or liability for repairs made to any Thoreson McCosh unit or equipment outside Thoreson McCosh's own factory unless specifically agreed to in writing by Thoreson McCosh.

Equipment and accessories furnished by us, but manufactured by others, are guaranteed to the extent of the original manufacturer's guarantee to Thoreson McCosh, if that guarantee exceeds one (1) year.

It is expressly understood that Thoreson McCosh is not responsible for damage and/or injury caused to buildings, contents, products, or persons by reason of installation or use of any of our products. Thoreson McCosh shall not be liable for loss, damage or expenses arising directly or indirectly from, or being consequential or incidental to, the use of its products or from any other cause.

The above warranty supersedes, and is in lieu of all other warranties expressed or implied; and no person, agent, representative or dealer is authorized to give any warranties on behalf of Thoreson McCosh, not to assume for Thoreson McCosh any other liability in connection with Thoreson McCosh products.

SECTION 2: INSTRUCTIONS

2.1 INTRODUCTION

Your Thoreson-McCosh Digital Dew Point Kit is designed to fit most any dryer.

2.2 INSTALLATION AND SETUP

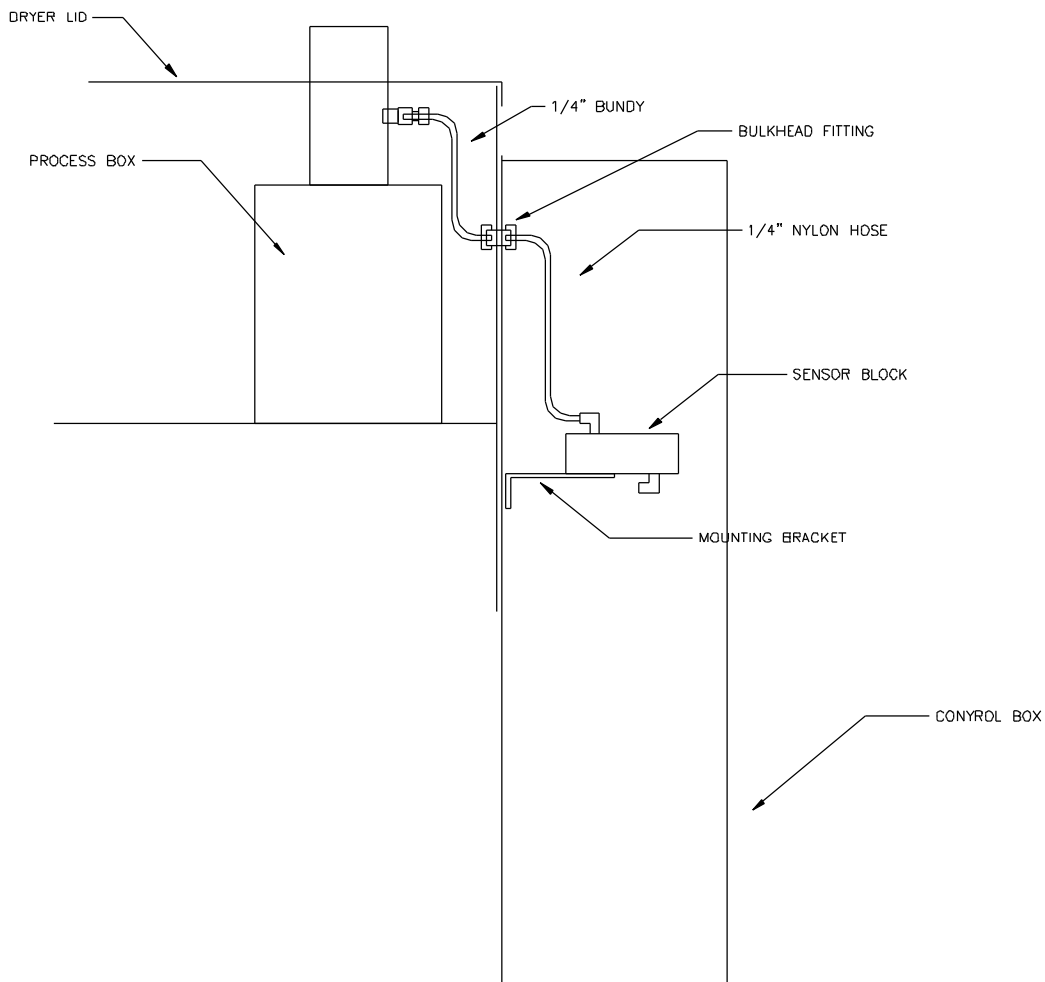
- Step 1. Remove all power from the Dryer.
- Step 2. Place the sensor manifold bracket on the panel in the general location indicated by the dryer wiring diagram. Mark the two mounting holes and drill the holes with a 9/64" drill bit. Mount the bracket with two self tapping #8-32 screws. Install the sensor manifold to the bracket with two #10-32 screws.
- Step 3. Place the Dew Point board on the panel in the general location indicated by the dryer wiring diagram. Mark the four mounting holes and drill with a 7/64" drill bit. Tap the holes with a #6-32 tap or run a 6-32 self-tapping screw in the hole to thread the holes. (Lubricate the screw before screwing in) Screw the #6 stand-offs into the four holes using a #6 flat washer between the stand-off and the panel. **DO NOT OVER TIGHTEN.** Mount the board on the stand-offs with four #6-32 screws.
- Step 4. Wire the Dew Point board per the dryer wiring diagram.
- Step 5. Drill a 7/16" hole through the cabinet into the control box near the top between the panel and the top of the control box. Install the bulkhead fitting using 2) 3/8" flat washers .
- Step 6. Remove the 1/8"-NPT plug from the coupling in the process tube. If there is no coupling, drill a hole with a "R" letter drill and tap the hole with a 1/8"-NPT tap. Install a straight or 90° compression fitting, depending on the location of the coupling in relation to where you installed the bulkhead fitting.
- Step 7. Bend the Bundy tubing so it goes from the bulkhead fitting to the fitting in the process tube.
- Step 8. Push the brass insert into the end of the 1/4" nylon hose and tighten the 1/4" nylon hose into the bulkhead fitting inside of the enclosure and connect the hose to the inlet of the sensor manifold.
- Step 9. Install the sensor into the sensor block and plug in the sensor cable.

Step 10. Remove the EPROM chips from the Main Control Board. Location U4 & U5. Install the new EPROM chips, paying attention to the notch in the socket and on the chip, and not to bend any of the pins.

Step 11. Recheck all new wire connections before applying power.

NOTE: All dryer set points should be rechecked. The Dew Point settings will need to be set. See the Dew Point section of your dryer instruction book.

LAYOUT



The sensor manifold may be mounted in any opening on the panel. Try to keep it towards the hinge side of the box and if possible keep away from high power wires.

SECTION 3: PARTS

Amt	Part No	Description
1		SET OF EPROM CHIPS
2		3/8" FLAT WASHERS
4		#6 FLAT WASHERS
1		#6-32 x 1/2 SELF TAPPING SCREW
1	409797	1/4 BULKHEAD FITTING
1	404597	1/8 NPT STRAIGHT CONNECTOR
1	409849	1/4 X 1/8 NPT MALE ELBOW CONNECTOR
2	408002	QUICK CONNECT ELBOW, 1/4"
1	412547	#6397 DEW POINT BOARD
4	409547	6-32 STANDOFF
1		SHIELDED SENSOR CABLE W/SOCKET
1	303980B	MANIFOLD BRACKET
1	410273	SENSOR MANIFOLD
1	411335	SENSOR, 1205-2
1	409668	INSERT
1	405155	SOCKET
1	409667	RING NUT
1	404758	BRASS INSERT

(TD-12/24)

1	404809	1/4" O.D. NYLON HOSE, 72" LONG
1	404809	1/4" O.D. NYLON HOSE, 12" LONG
1	406068	1/4" O.D. BUNDY TUBING, 8" LONG

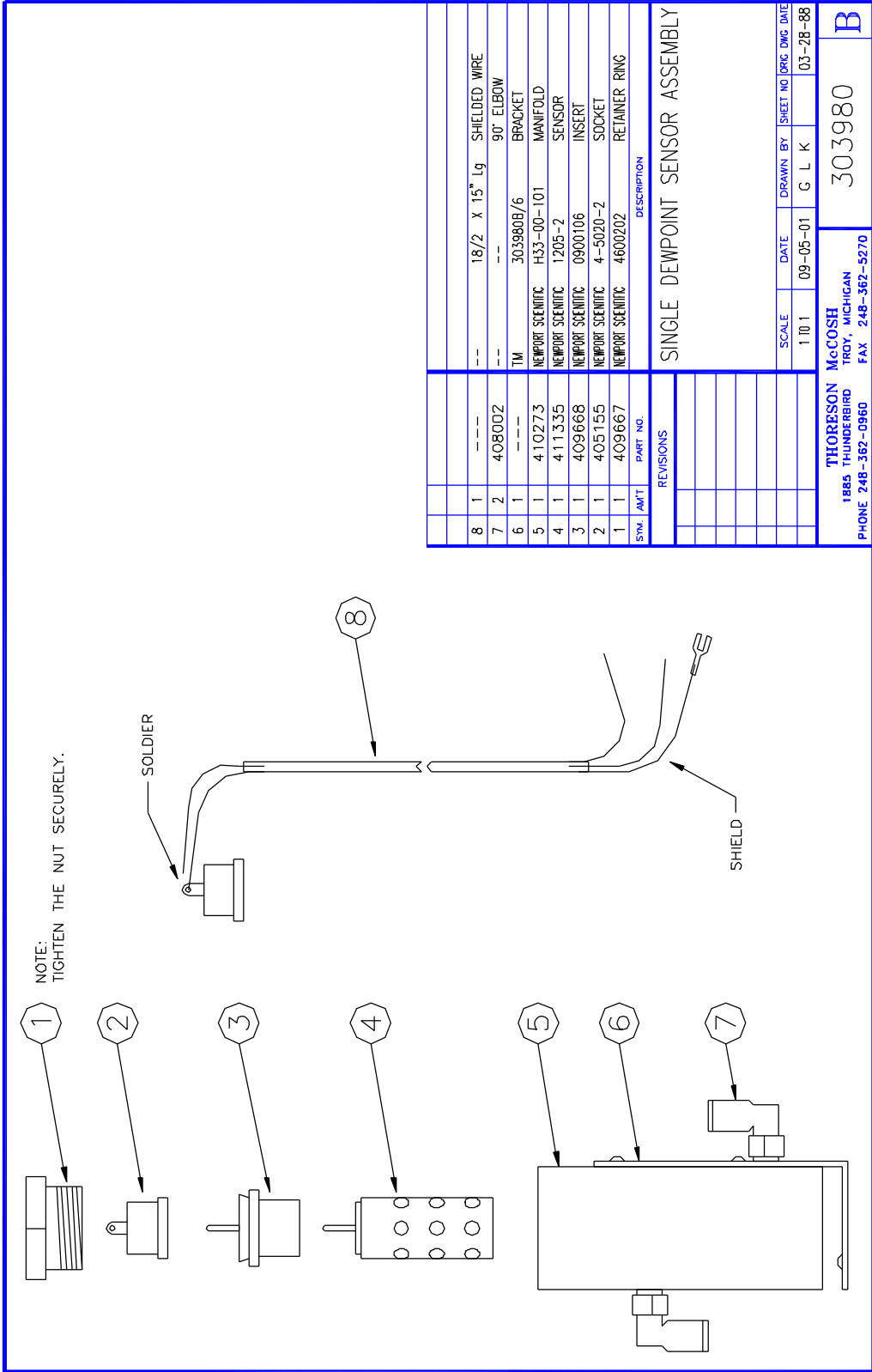
(TD-40 THRU 360)

1	404809	1/4" O.D. NYLON HOSE, 85" LONG
1	404809	1/4" O.D. NYLON HOSE, 12" LONG
1	406068	1/4" O.D. BUNDY TUBING, 24" LONG

(TD-480 THRU 2000)

2	404809	1/4" O.D. NYLON HOSE, 12" LONG
1	406068	1/4" O.D. BUNDY TUBING, 24" LONG

Thoreson-McCosh Inc



8	1	---	18/2 X 15" Lg	SHIELDED WIRE
7	2	408002	--	90° ELBOW
6	1	---	303980B/6	BRACKET
5	1	410273	NEWPORT SCIENTIFIC H33-00-101	MANIFOLD
4	1	411335	NEWPORT SCIENTIFIC 1205-2	SENSOR
3	1	409668	NEWPORT SCIENTIFIC 0900106	INSERT
2	1	405155	NEWPORT SCIENTIFIC 4-5020-2	SOCKET
1	1	409667	NEWPORT SCIENTIFIC 4600202	RETAINER RING
SYM. AMT PART NO. DESCRIPTION				
REVISIONS				
SINGLE DEWPOINT SENSOR ASSEMBLY				
SCALE		DATE	DRAWN BY	SHEET NO / ORG / DWG DATE
1/01		09-05-01	G L K	03-28-88
THORESON McCOSH 1885 THUNDERBIRD TROY, MICHIGAN PHONE 248-362-0960 FAX 248-362-5270				303980
				B

OPTION X6 – DEWPOINT INDICATION & SHIFT
HUM, 6397

