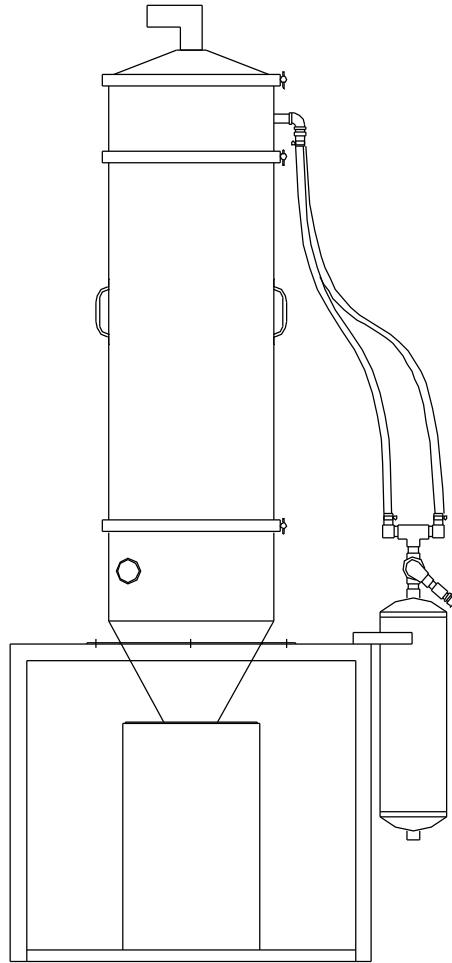


Thoreson-McCosh CENTRAL FILTER



INSTRUCTION MANUAL

IB200202

THORESON-McCOSH INC
1885 Thunderbird St. Troy MI. 48084
Phone 1-248-362-0960
Fax 1-248-362-5270
sales@thoresonmccosh.com

Thoreson-McCosh Inc

FORWARD

The information contained in this Instruction Manual is provided to you for the maintenance of your Thoreson-McCosh equipment.

Also included in this manual are operating instructions, a service parts list, and wiring diagrams. Please file this manual for future use.

For additional information, please contact:

THORESON-McCOSH Inc.

1885 Thunderbird Street

Troy, MI 48084

Phone: (248) 362-0960

Facsimile: (248) 362-5270

sales@thoresonmccosh.com

CUSTOMER RECORDS

Upon receipt of your Thoreson-McCosh equipment, it is very important that you complete the table below. The information will be needed to best serve you when you call the Thoreson-McCosh Service Department with questions or to order replacement parts. The information is located on the Serial Tag on the unit and inside the door of the control box.

Model Name _____

Serial No. _____

Wiring Diagram No. _____

Insert No. _____

Program No. _____

Layout No. _____

Table of Contents

SECTION 1: WARRANTY2
SECTION 2: INTRODUCTION.....3
 2.1: METHOD OF OPERATION3
 2.2: CB FILTER3
 2.3: RB FILTER3
 2.4: VB FILTER.....3
 2.5: INSTALLATION AND SETUP3
SECTION 3: CENTRAL FILTER MAINTENANCE4
 3.1: FILTER MAINTENANCE4
 3.2: REPLACEMENT PARTS4
TYPICAL SYSTEM LAYOUT5
CB1 & RB1 FILTER LAYOUTS6
CB1 & RB1 FILTER PARTS LISTS7
CB4 & RB4 FILTER LAYOUTS8
CB4 & RB4 FILTER PARTS LISTS9

SECTION 1: THORESON-MCCOSH PRODUCT WARRANTY

Thoreson-McCosh warrants each product of its manufacture to be free from defects in material and workmanship for a period of 12 months from the date of delivery to the original purchaser. Thoreson-McCosh's obligation under this warranty is limited to repairing or replacing any part returned to the Thoreson-McCosh factory with transportation charges prepaid, and which, on examination by Thoreson-McCosh, shall disclose to Thoreson-McCosh's satisfaction to have been defective.

The purchaser must notify Thoreson-McCosh of such defects and promptly deliver the defective part(s) in accordance with Thoreson-McCosh's shipping instructions, delivery prepaid. Parts will be replaced F.O.B. Thoreson-McCosh factory, by Thoreson-McCosh, and will be invoiced to the purchaser with "credit on return of defective part", if the part is returned within fifteen (15) days after shipment of replacement part. Thoreson-McCosh is not liable for installation or cost to install the replacement part or removal of the defective part.

Thoreson-McCosh is not responsible for any failure of its product due to improper use, installation, or operation. Thoreson-McCosh shall not assume any expense or liability for repairs made to any Thoreson-McCosh unit or equipment outside Thoreson-McCosh's own factory unless specifically agreed to in writing by Thoreson-McCosh.

Equipment and accessories furnished by us, but manufactured by others, are guaranteed to the extent of the original manufacturer's guarantee to Thoreson-McCosh, if that guarantee exceeds one (1) year.

It is expressly understood that Thoreson-McCosh is not responsible for damage and/or injury caused to buildings, contents, products, or persons by reason of installation or use of any of our products. Thoreson-McCosh shall not be liable for loss, damage or expenses arising directly or indirectly from, or being consequential or incidental to, the use of its products or from any other cause.

The above warranty supersedes, and is in lieu of all other warranties expressed or implied; and no person, agent, representative or dealer is authorized to give any warranties on behalf of Thoreson-McCosh, not to assume for Thoreson-McCosh any other liability in connection with Thoreson-McCosh products.

SECTION 2: INTRODUCTION

2.1: METHOD OF OPERATION

The Thoreson-McCosh Central Filter employs a self-cleaning fabric filter bag or filter cartridge that allows an easy way for filter maintenance on a multiple receiver system. After a load cycle, the filters are cleaned by forcing air backwards through the filter causing the powder residue and fines out of the bottom of the filter unit and into a fines bag that holds the material, and allows the air to escape. This is done in 1 of 3 ways.

2.2 CB FILTER

The CB or Compress Air Blowback System, uses your compressed air to clean the filter. After the pump is done with a load cycle, an electric solenoid is energized to allow compressed air to flow backwards through the filter, causing the material to fall from the bag and fall out the bottom of the unit.

2.3 RB FILTER

The RB or Reverse Blowback System uses the pump unit to clean the filter. After the pump is done with a load cycle, the pump will reverse and blow air backwards through the filter, causing the material to fall from the bag and fall out the bottom of the unit.

2.4 VB FILTER

The VB or Vacuum Break Blowback System, uses ambient air to clean the filter. After the pump is done with a load cycle, an electric solenoid is energized to allow compressed air to flow backwards through the filter bag, causing the material to fall from the filter and fall out the bottom of the unit.

2.5 INSTALLATION AND SETUP

The Central Filter must be hooked-up between the Pump Unit and the vacuum lines going to the receivers. The vacuum line from the pump unit will connect to the tube at the top of the filter unit. The vacuum line going to the loading system, will connect to the tube near the bottom of the Central Filter.

If using a CB or VB Central Filter, the solenoids will need to be wired to the Central System Control Box. (See wiring schematic.) CB units will also need to have compressed air of 80 to 100 psi connected to the accumulator tank.

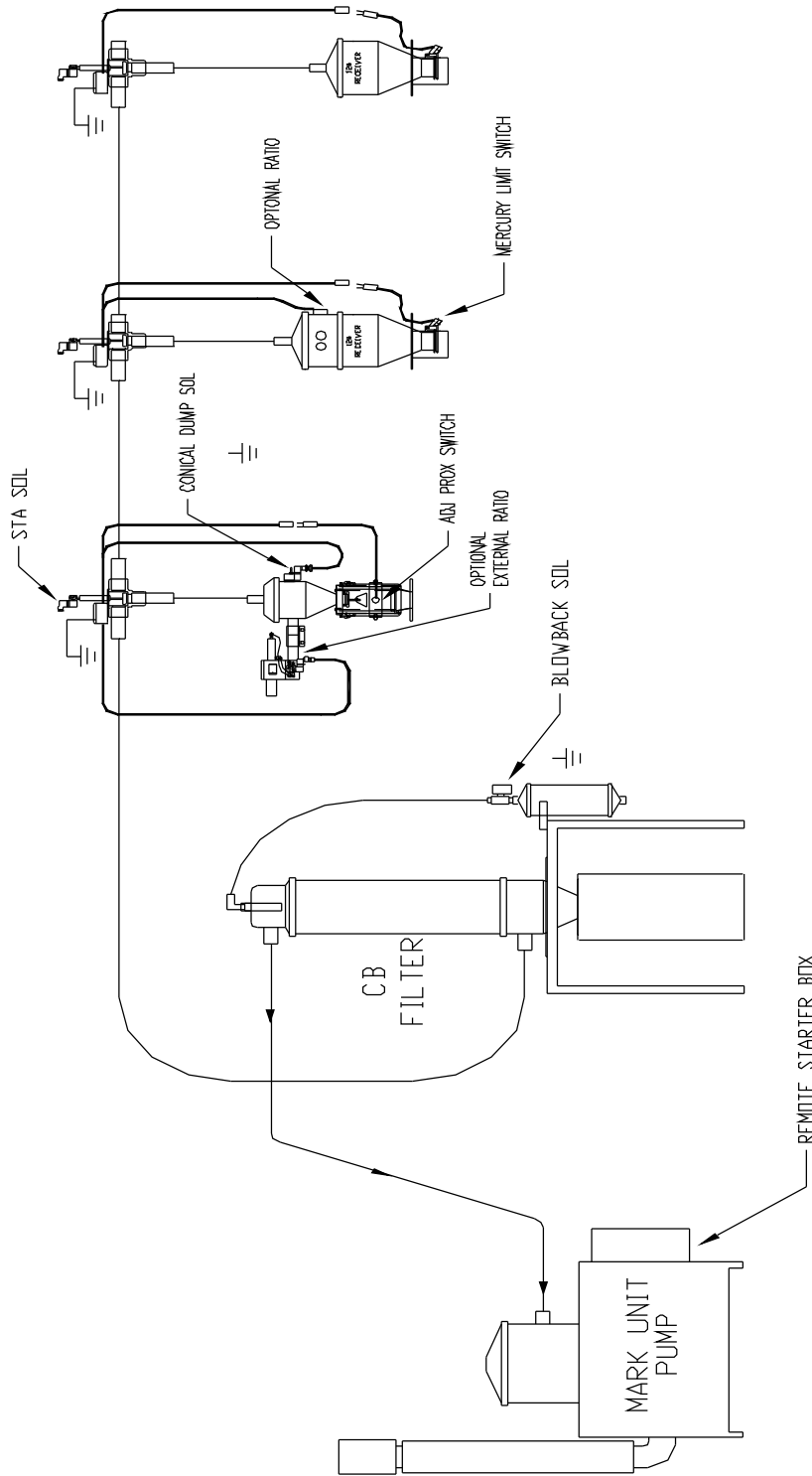
SECTION 3: CENTRAL FILTER MAINTENANCE

3.1: FILTER MAINTENANCE

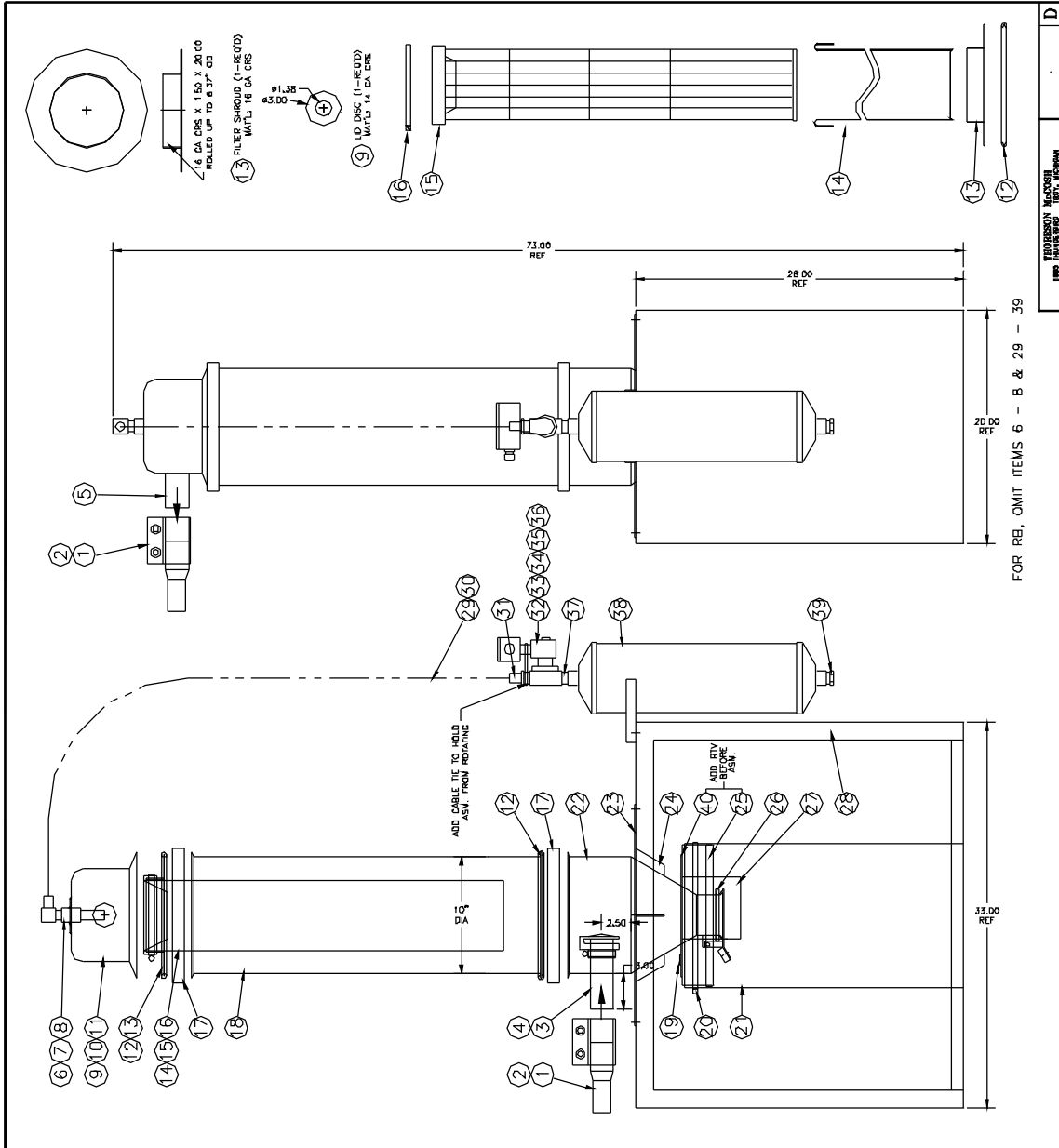
- It is recommended that the Fines Bag be checked DAILY for material residue accumulation. The Bag should be emptied before the material residue causes reduced performance in the loading system
- It is recommended that filters be checked at least once a month for material residue accumulation, and cleaned before the loader's performance is reduced.
- Inspect the filter on the pump weekly. These are cartridge type filter elements and may be cleaned with compressed air several times before a new element must be installed. When filter material becomes worn, a new filter should be installed. Replacement filters are available from **Thoreson-McCosh, Inc.**
- Inspect and clean the filter screen in the receiver hopper at least once a month (more often if dusty materials are being conveyed).

3.2: REPLACEMENT PARTS

DVL Filter	1) 5" Dia Filter Bag (12" Lg).....	412177
Or	1) 5" Dia Filter Cartridge (8" Lg).....	414172
C,R,V B-1	1) 6" DIA. Filter Bag (30" Lg).....	408433
Or	1) 6" Dia Filter Cartridge (28" Lg).....	414173
C,R,V B-4	4) 5" DIA. Filter Bag (30" Lg).....	407009
Or	4) 6" Dia Filter Cartridge (28" Lg).....	414173
Fines Bag	1) 12 3/8 DIA. Bag (23" Lg).....	407402
Solenoid Valves		
	3/8" NPT 115 vac	406783
	3/4" NPT 24 vac	410919
	3/4" NPT 115 vac	406945
Check Valves		
	1.5"	411690
	2"	411690
	2 3/16"	411690
	2.5"	413023
	3"	413023



TYPICAL LOADING SYSTEM LAYOUT



Thoreson-McCosh Inc

40	1	412136C/10"BASE	BASE FOR 10" REC. CAN	15	1	408434	FILTER BAG RETAINER
39	1	413967	3/4"NPT TO 3/8" NPT REDUCER BUSHING	14	1	408433	FILTER BAG
38	1	304131-B	SURGE TANK ASM.	13	1	SEE DETAIL	FILTER SHROUD
37	1	404722	3/4" NPT CLOSE NIPPLE	12	2	409402	V-CHANNEL SEAL
36	1	413535	1/2" STRAIN RELIEF	11	1	403332	SPUN RING W/8" ID CENTER HOLE
35	1	406433	1/2" NPT CHASE NIPPLE W/SPACER	10	1	402896	8" DIA. SPUN ENCLOSURE
34	1	406213	HANDY BOX COVER	9	1	SEE DETAIL	LID DISC
33	1	406125	2 X 4 HANDY BOX	8	1	406841	3/4" NPT X 3" LG NIPPLE
32	1	406945	110 VOLT AC SOLENOID VALVE-3/4" NPT	7	1	404616	3/4" NPT FULL COUPLING
32	1	410919	24 VOLT AC SOLENOID VALVE-3/4" NPT	6	1	409828	3/4" NPT TO 3/4" HOSE 90° FITTING
31	1	409945	3/4"NPT TO 3/4" HOSE STRAIGHT FITTING				
30	2	405820	3/4" HOSE CLAMP	5	1	404872	3.00" OD TUBE X 3.00" LG
29	1	412134	3/4" ID AIR HOSE	4	1	413023	MOLDED CHECK VALVE W/CLAMP
28	1	304319-C	FLOOR STAND ASM.	3	1	404872	3.00" OD TUBE X 6.00" LG
27	1	304288-D	TRAP DOOR DISCHARGE				
26	1	413091	DOOR SEAL	5	1	410398	2.50" OD TUBE X 3.00" LG
25	1	SEE DETAIL	BAG HOLDR ASM.	4	1	413023	MOLDED CHECK VALVE W/CLAMP
24	4	304319-C/E	FLOOR STAND RING GUSSETS	3	1	410398	2.50" OD TUBE X 6.00" LG
23	1	304319-C/D	FLOOR STAND RING				
22	1	414074	10" DIA. SPUN CAN W/O BASE & TUBE	2	2	412915	2" ID 2-BOLT COUPLING
21	1	407402	DISCHARGE FILTER BAG	1	2	411522	2.18" OD TO 2" OD TUBE
20	1	404592	12" HOSE CLAMP				
19	1	410895	PLUG-HOFFMAN	5	1	404869	2" OD TUBE X 3.00" LG
18	1	411948-B	BARREL-10" DIA X 30" HIGH	4	1	411690	MOLDED CHECK VALVE W/CLAMP
17	2	405824	LID CLAMP	3	1	404869	2" OD TUBE X 6.00" LG
16	1	404591	6" HOSE CLAMP				
15	1	408434	FILTER BAG RETAINER	2	2	412915	2" ID 2-BOLT COUPLING

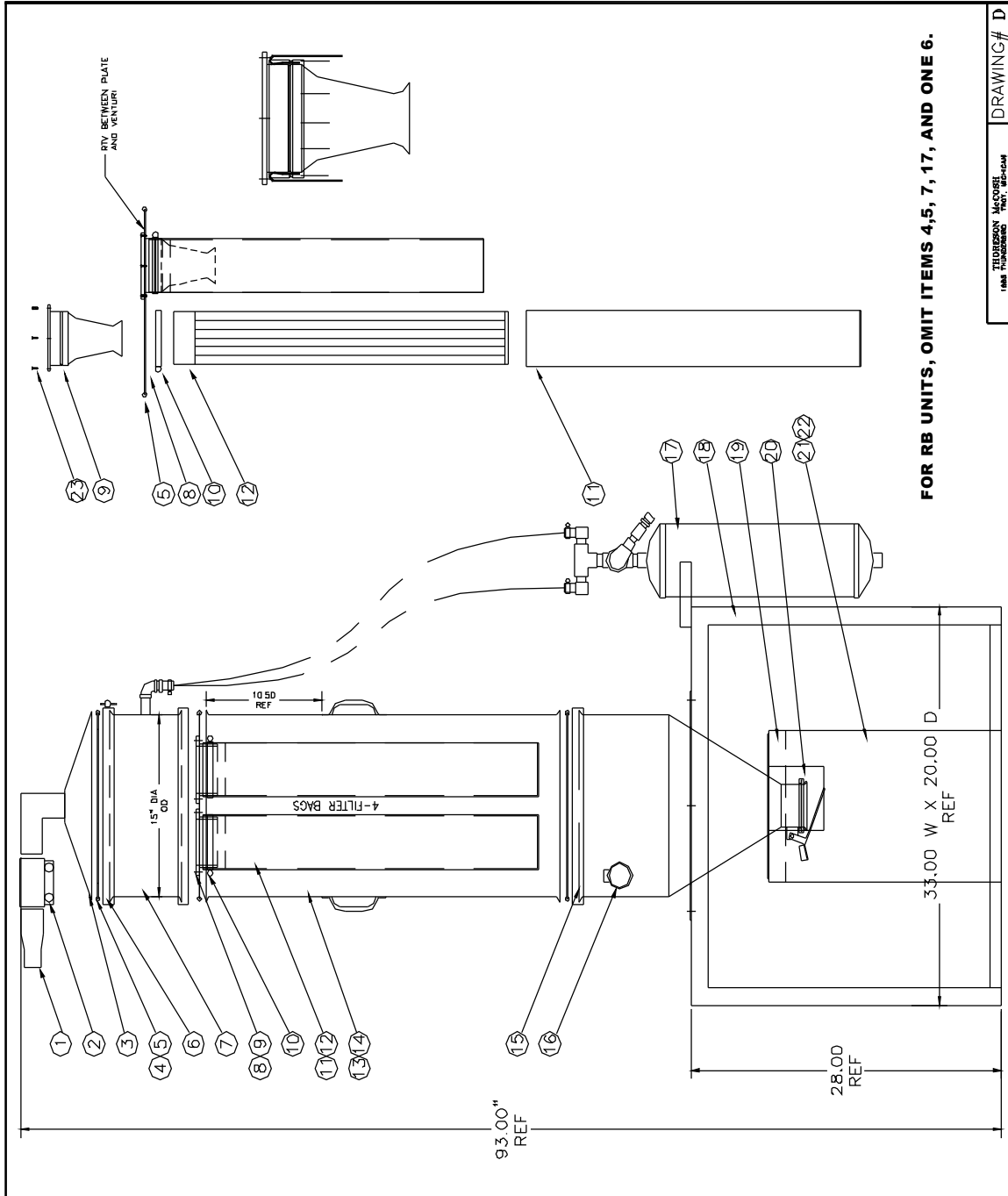
3.00" OD SYSTEM

2.50" OD SYSTEM

2.18" OD SYSTEM

1.50", 2" & 2.18" OD SYSTEMS

1.50" OD SYSTEM



Thoreson-McCosh Inc

23	16	404939	10-32 SCREW
22	1	404592	12" HOSE CLAMP
21	1	407402	DISCHARGE FILTER BAG
20	1	304288-D	TRAP DOOR DISCHARGE WITH SEAL 413091
19	1	411855-C	BAG FOLDER FLANGE
18	1	304319-C	FLOOR STAND ASSEMBLY
17	1	304131-B	SURGE TANK ASSEMBLY
16	1	411690	2" CHECK VALVE
15	1	412137	15" SPUN HOPPER CAN
14	2	411409	HANDLE
13	1	304320-C	BARREL ASSEMBLY
12	4	406987	FILTER BAG RETAINER
11	4	407009	FILTER BAG
10	4	411854	4" HOSE CLAMP
9	4	406972	VENTURI
8	1	411855-C/7	VENTURI MOUNTING PLATE
7	1	304351-C	BLOWBACK RING
6	3	407409	LID CLAMP
5	3	409402	V-CHANNEL SEAL
4	2	404843	14 GAGE CRS RING, 15.38 OD X 13.88 ID
3	1	402775	SPUN LID WITH HOLE CUT TO ID
2	1	XXXXXX	COUPLING
1	1	XXXXXX	REDUCER TUBE
SYM.	AM'T	PART NO.	DESCRIPTION

